

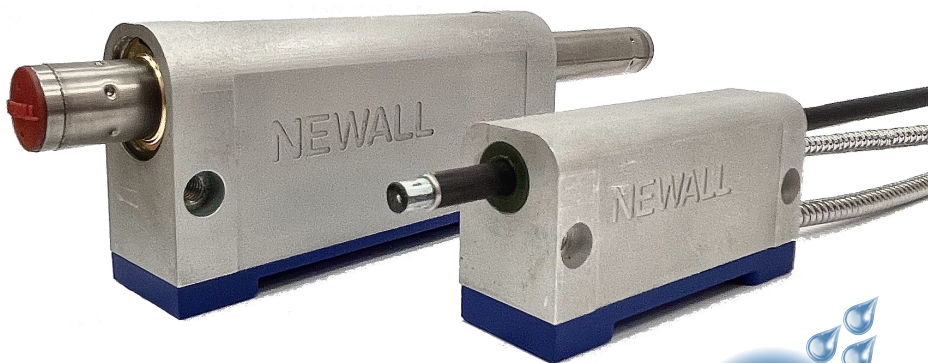
# NEWALL

# NMS 100 Serial Readout System

Newall's NMS 100 is a powerful and intuitive DRO that is housed in a rugged cast aluminium chassis with a wipe clean front panel. The innovative design allows the operator to easily configure any single axis position applications. The NMS 100 DRO is interfaced with Newall's Spherosyn Serial and Microsyn serial encoders that are designed to provide consistent accuracy and reliability even under the harshest work shop conditions.

## FEATURES INCLUDE:

- > Clean, crisp LCD display
- > Wide viewing angle
- > Intuitive message display
- > Long life membrane keypad
- > Feed rate display
- > Applications include:  
General machining functions, back gauges,  
Sawing, cut off, inspection, length gauges,  
Metrology




## SALES & SERVICE:

**A Tech Authority, Inc.**  
13745 Stockton Ave.  
Chino CA 91710  
909-614-4522  
sales@atechauthority.com



## The Newall Advantage

- Backed by a company with over 50 years of proven reliability in manufacturing DRO systems & linear encoders
- Encoders carry an IP67 rating – All electronic and measuring components are sealed from the environment
- Continually provides accurate readings even under the harshest shop conditions
- No cleaning or maintenance required
- Tolerant to shock and vibration
- No glass or tape to break or scratch
- Ease of installation—no backer bar or machined surface required

<b>General Purpose Functions</b>	Feed Rate Display Multiple Language Support Absolute / Incremental Zero Approach Warning (graphic) Pre-set and Zero reset Instant Inch/mm conversion Linear compensation Digifind/pre-loadable reference Centre find (establish workpiece midpoints) Programmable Memory (store up to 200 co-ordinates) Imperial fractional display Undo function (move back up to eight steps if a mistake is made)	
<b>Encoder Compatibility</b>	Newall Spherosyn Serial & Newall Microsyn Serial (not compatible with S2G or M2G)	
<b>Display</b>	STN LCD Screen — Membrane keypad with audible tactile feedback	
<b>Options</b>	Panel Mount Housing Mounting arms (see mounting arm data sheet) DRO data collection package	
<b>Construction</b>	Aluminium Body	
<b>Weight</b>	0.5Kg (1.1lbs)	
<b>Dimensions</b>	Height: 104mm (4.1"), Width: 200mm (7.87"), Depth: 90mm (3.54")	
<b>Data Interface</b>	RS-232 Output	
<b>Electrical Requirements</b>	Voltage of 100-240 VAC (47 – 63 Hz) to external PSU included Voltage Input to NMS 100 display 15 – 24 VDC ± 10%	
<b>Operating Temperature</b>	-10° to 50°C (14° to 122°F)	
<b>Storage Temperature</b>	-20° to 70°C (-4° to 158°F)	

Encoder Mechanical Specs.	Spherosyn Serial	Microsyn Serial
Scale Travels	52mm—13,000mm	50mm—1,000mm
Scale Diameter / Material	15.25mm / Stainless Steel	5.75mm / Carbon Fibre
Reader Head Dimension	99.45mm x 47mm x 30.5mm	75mm x 35mm x 25mm
Overall Scale Length	Travel Length + 258mm	Travel Length + 173mm
Standard Cable Length	3.5 metre and/or 7.0 metre with Armour and D Style Connector	

### The Spherosyn Serial and Microsyn Serial Advantage:

- > IP67 environmental rating, fully submersible
- > Withstands dust, dirt, oil and other harsh environment conditions
- > No mechanical wear characteristics
- > No more broken or scratched glass
- > Requires no cleaning or regular maintenance



Worldwide Sales Offices

**Europe & Asia-Pacific**  
+44 116 264 2730

**Americas**  
+1 614 771 0213



@Newall\_Ltd



Newall Measurements

www.newall.com

sales@newall.com